

42-Meter Truck-Mounted Specifications

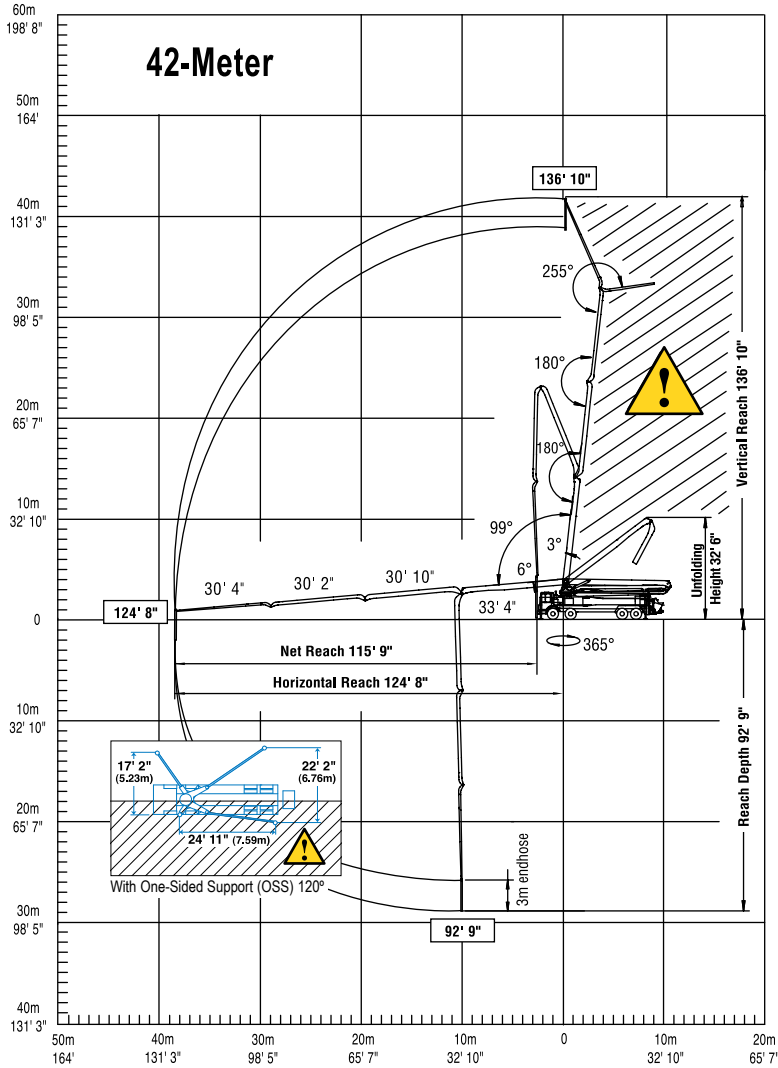
Based on Model MACK MRU 613 with .16H pump cell

Length	42' 11"	(13.07)
Width	8' 2"	(2.50m)
Height	13' 3"	(4.04)
Wheelbase	285"	(7,239mm)
Front axle weight	32,641 lbs	(14,806kg)
Rear axle weight	37,782 lbs	(17,138kg)
Approx. total weight	70,423 lbs	(31,944kg)

Weights are approximate and include pump, boom, truck, full hydraulic oil, driver and some fuel. Varies with options selected.

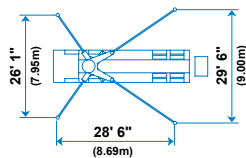
Dimensions will vary with different truck makes, models and specifications.

Range Diagram



End hose not to be operated in caution area.

Photos and drawings are for illustrative purposes only. For available options, please refer to price list.



Boom Specifications • Roll-and-Fold Design

Height & Reach

Vertical reach	136' 10"	(41.70m)
Horizontal reach	124' 8"	(38.00m)
Reach from front of truck* (net reach)	115' 9"	(35.30m)
Reach depth	92' 9"	(28.29m)
Unfolding height	32' 6"	(9.90m)

4-Section Boom

1st section articulation	99°
2nd section articulation	180°
3rd section articulation	180°
4th section articulation	255°
1st section length	33' 4" (10.16m)
2nd section length	30' 10" (9.40m)
3rd section length	30' 2" (9.19m)
4th section length	30' 4" (9.25m)

General Specs

Pipeline size (ID) metric ends	5"	(125mm)
Rotation	365°	
End hose — length (lightweight)	10'	(3.00m)
End hose — diameter	5"	(125mm)
Outrigger spread L-R — front extend diagonally out and down	26' 1"	(7.95m)
Outrigger spread L-R — rear swing out and extend down	29' 6"	(9.00m)

Pump Specifications 42.16H 42.20H

Output — rod side	210 yd ³ /hr (160m ³ /hr)	—
piston side	146 yd ³ /hr (112m ³ /hr)	260 yd ³ /hr (200m ³ /hr)
Pressure — rod side	1233 psi (85 bar)	—
piston side	1885 psi* (130 bar)*	1233 psi (85 bar)
Material cylinder diameter	9" (230mm)	11" (280mm)
Stroke length	83" (2100mm)	83" (2100mm)
Max strokes per minute — rod side	31	—
piston side	21	26
Volume control	0-Full	0-Full
Vibrator	Standard	Standard
Hard chromed material cylinders	Standard	Standard
Hydraulic system	Free Flow	Free Flow
Hydraulic system pressure	5075 psi (350 bar)	5075 psi (350 bar)
Differential cylinder diameter	5.5" (140mm)	5.5" (140mm)
Rod diameter	3.1" (80mm)	3.1" (80mm)
Maximum size aggregate	2.5" (63mm)	2.5" (63mm)
Water tank — pedestal	40 gal (145L)	40 gal (145L)
outrigger	153 gal (580L)	153 gal (580L)

Maximum theoretical values listed.

* Applies to units mounted on PMA stock truck—Mack MRU 613

• Standard delivery line system rated at max line pressure of 1233 psi (85 bar)

Putzmeister

Putzmeister America, Inc. Telephone (262) 886-3200
1733 90th Street (800) 884-7210
Sturtevant, WI 53177 USA Facsimile (262) 884-6338
www.putzmeister.com



12

Authorized Distributor